



ALF  RAJ
ART GLASS

SQUARE ART CONSTRUCTION COMPANY

ترخيص منشأة صناعية

استثمار وطني



VISION 2030
المملكة العربية السعودية
KINGDOM OF SAUDI ARABIA

رمز المنشأة ١٠٠٠٣٨١٦
نوع القرار جديد
تاريخ الترخيص ١٤٤١-٠٣-٢٠
رقم القرار ١٠٠١٠٠٩١٩٣
تاريخ القرار ١٤٤١-٠٣-٢٠
تاريخ الانتهاء ١٤٤٤-٠٣-١٩

اسم المنشأة الصناعية
السجل التجاري للمنشأة الصناعية
مالك المنشأة

مصنع شركة الزجاج والمعادن الصلبة
٢٠٥٣١١٣٩٦٦
شركة الزجاج والمعادن الصلبة التجارية (شركة شخص واحد)

هاتف +٩٦٦٦٥٠٤٩٨٠٢٩٩
فاكس (N50.03156018827872 ,E26.582646054902945)
موقع المنشأة الصناعية المنطقة الشرقية القطيف

النشاط الرئيسي صنع المنتجات المعدنية الانشائية / ٢٥١١

عدد العمالة ٤٨
حجم الاستثمار ٢٦٠٨٩٧٠٠٦
ثمانية و أربعون فرداً
مليونان و ستمائة و ثمانية ألفا و تسعمائة و سبعون ريال و ستة هللة

رمز المنتج	وصف المنتج	النشاط الصناعي	الطاقة الانتاجية	الوحدة
٧٦١٠١٠٩٠	ابواب ونوافذ وسحابات المنيوم	٢٥١١٦٠ / ورش صناعة الألمنيوم	١٠٥٠٠٠	قطعة

وزير الصناعة والثروة المعدنية

بندر بن إبراهيم الخريف



Alfarajart Glass Co.

was established in 2008 as a glass decoration company. In 2010, the owners of the company decided to add new lines of production to the business, which are fabricating aluminium, materials and mirrors. In 2011, the company dominated the market in all fields. Furthermore, in 2015, its name has been changed to Sqare Art Constructing Co. The factory is located in Al-Turkia industrial area, Qatif and the showroom (main office) is on Riyadh Street, near the Technical College in Qatif, too. In 2019, Alfarajart launched a new department to support our products (Aluminium materials, glass and mirrors) to increase sales through the design. Our specialist interior designers are graduates from best universities in Saudi Arabia. Square Art has active employees including the management and staff. Our 35-year experienced engineer in aluminium, glass and mirrors has chosen each of our factory members carefully. The company has mastered all kind of aluminium fabrication glass and mirror types such as doors windows, glass facade, curtain wall, structural glass, sand blasting, stair handrails, mirror with light, 3D design, colour design, stain glass, shower cabinet, etc. We have our own standard which has met the standard of the biggest companies in Saudi Arabia such as Aramco (**Vendor Code No. 1005708**) and SABIC. Our standard is considered high by those companies because we use high quality materials and parts. Most of the parts and accessories are made in Europe and some are bought from local companies such as TECHNICAL SEAL and Garden glass.



Quality Policies & Quality Control:

- Quality management is required to maintain continuous effectiveness.
- Focusing on customer satisfaction through a special team to keep building powerful reputation.
- Increasing our competitive strength in the sector by always improving our staff members satisfaction and training.
- Assigning special team to visit most important events such as Big 5, BAU etc. to keep track any new machines and materials to keep our business always up to date.

Projects Accomplished:

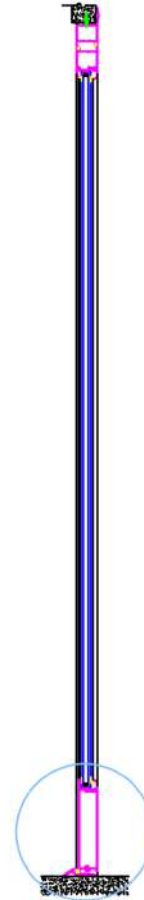
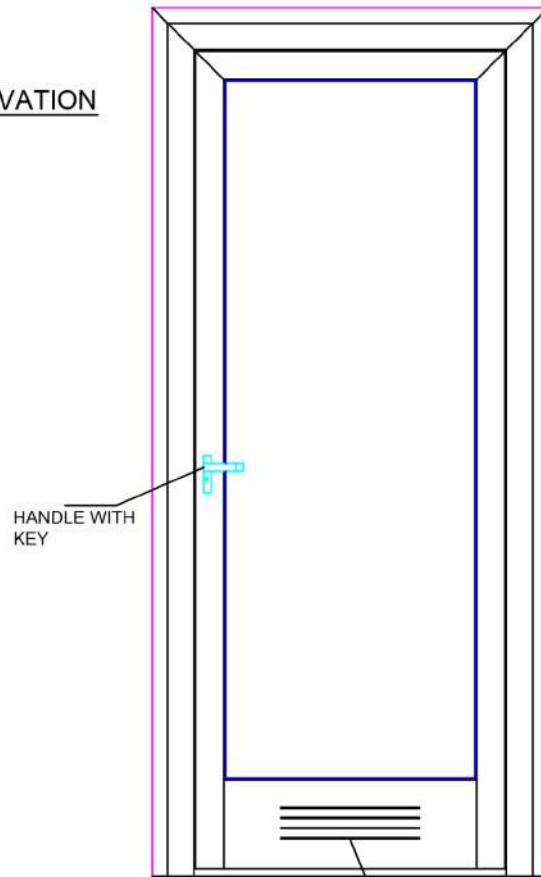
	Saudi Aramco		
	Saudi Electricity Company		AlMooasa Hospital
	DB Shunker		AlZahra Hospital
	Banque Saudi Fransi		Noor Advance Construction Company
	Alawal Bank		Noor Carton
	King Fahd Causeway		Milano Kitchen Company
	Aramex		Shafiq Construction Company
	Ikea		Al kunaini International Company
	Alsaif Medical Center		Tamimi Company
			Convergent Technology Company

Our Mission:

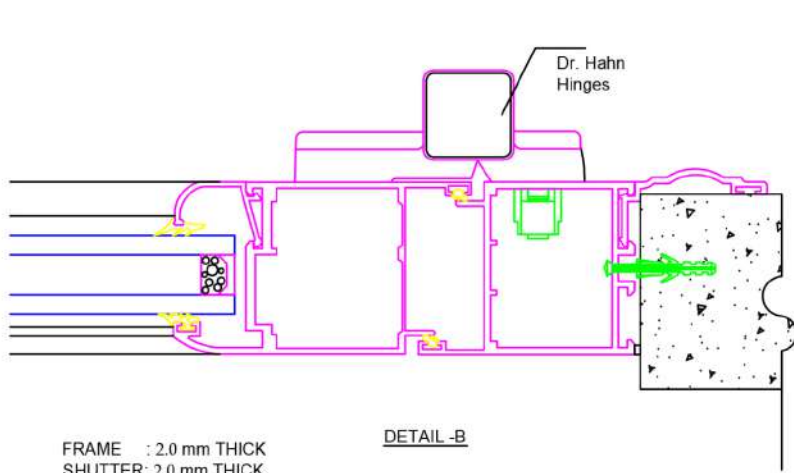
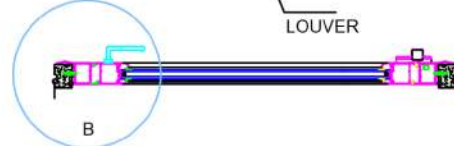
To be one of the Saudis leading designers who enhance interior quality of commercial and residential all local projects and leading provider of Aluminum glass mirrors by using high quality and brands products.

SINGLE LEAF SWING DOOR
TYPE 1#

ELEVATION

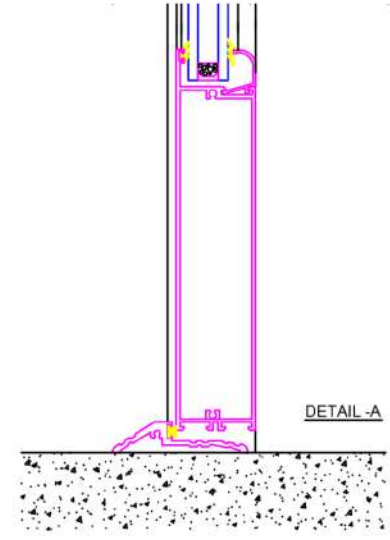


PLAN



FRAME : 2.0 mm THICK
SHUTTER: 2.0 mm THICK
GLASS : 22 mm THICK

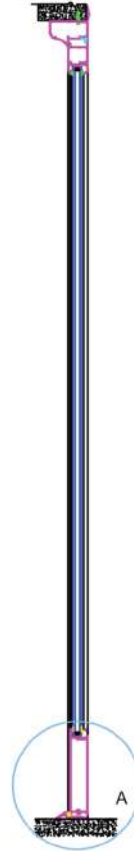
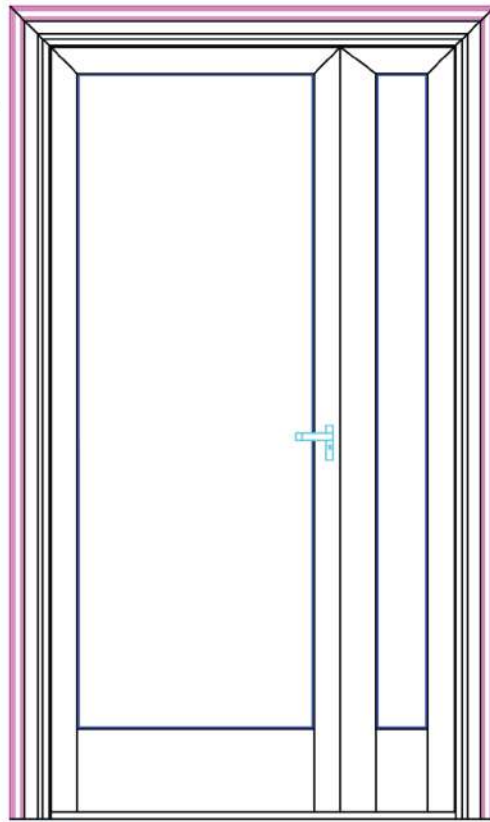
DETAIL-B



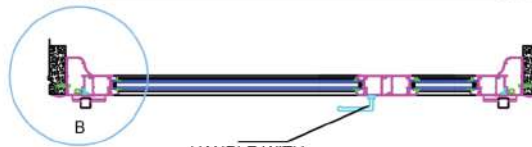
DETAIL-A

DOUBLE LEAF SWING DOOR
TYPE 2#

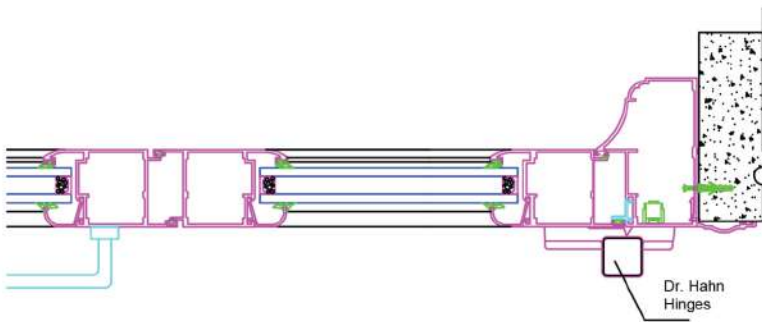
ELEVATION



PLAN

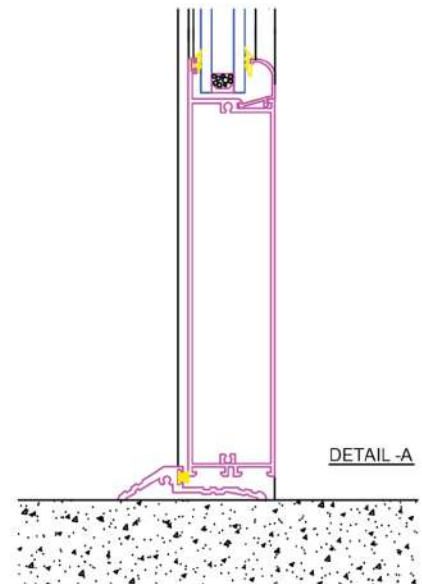


HANDLE WITH KEY



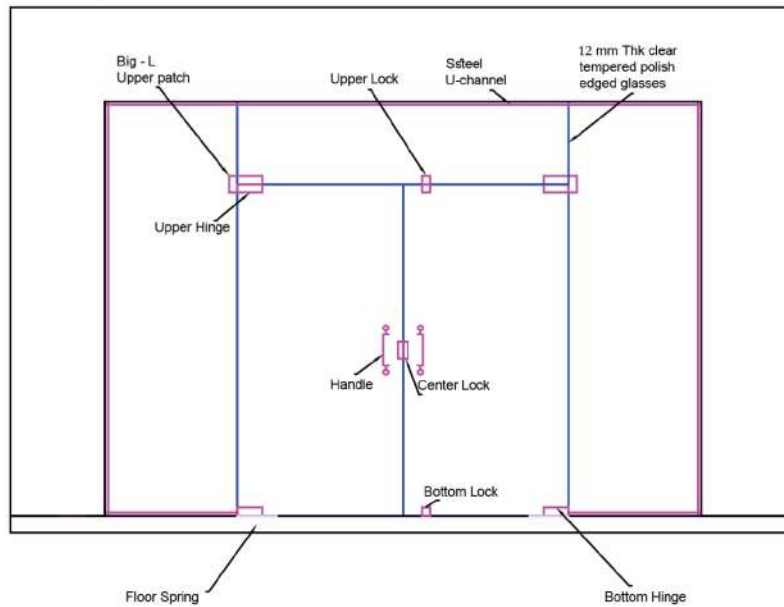
DETAIL -B

FRAME : 2.0 mm THICK
SHUTTER: 2.0 mm THICK
GLASS : 22 mm THICK

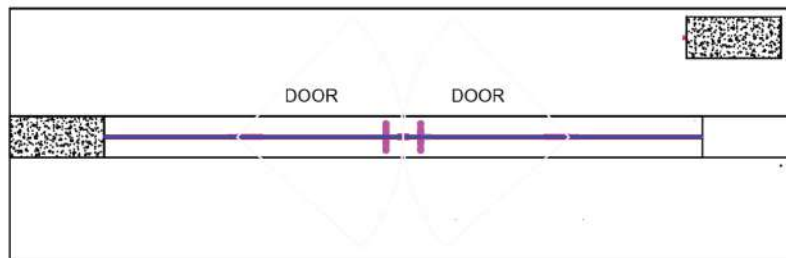


DETAIL -A

FRAMELESS DOUBLE SWING GLASS ENTRANCE ELEVATION



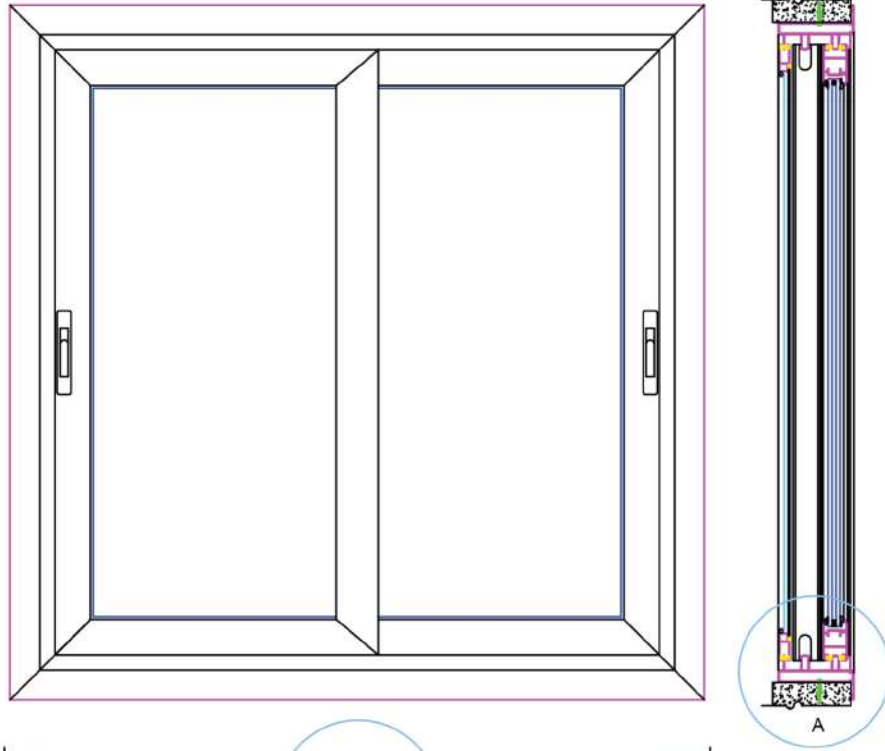
PLAN



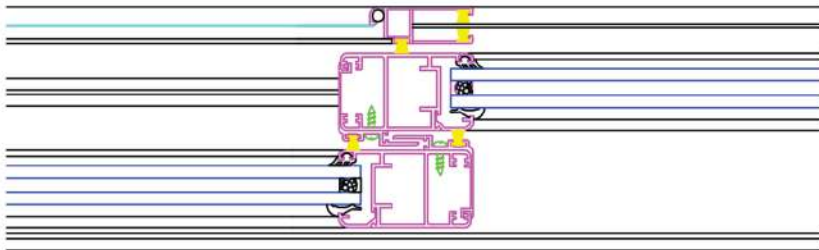
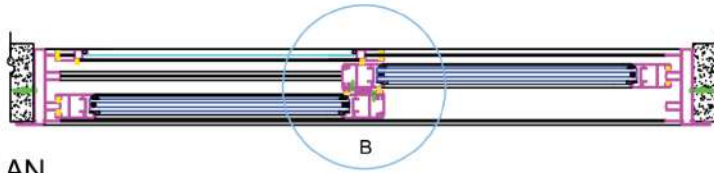
- 12 MM. THK. TEMPERED GLASSES WITH POLISHED EDGE
- POLISHED STAINLESS STEEL 304 GRADE ACCESSORIES
- ITALIAN BRANDED HEAVY DUTY DURABLE FLOOR SPRING

SARAYA SLIDING WINDOW

ELEVATION

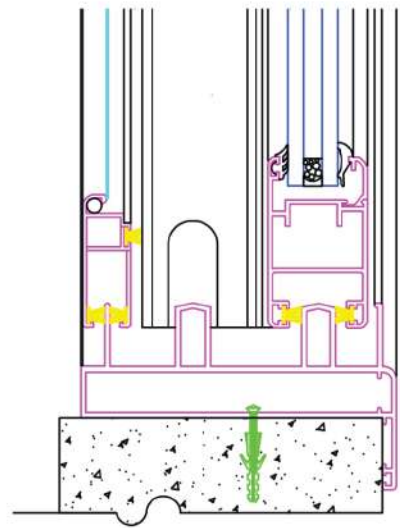


PLAN



FRAME : 2.0 mm THICK
SHUTTER: 2.0 mm THICK
GLASS : 22 mm THICK

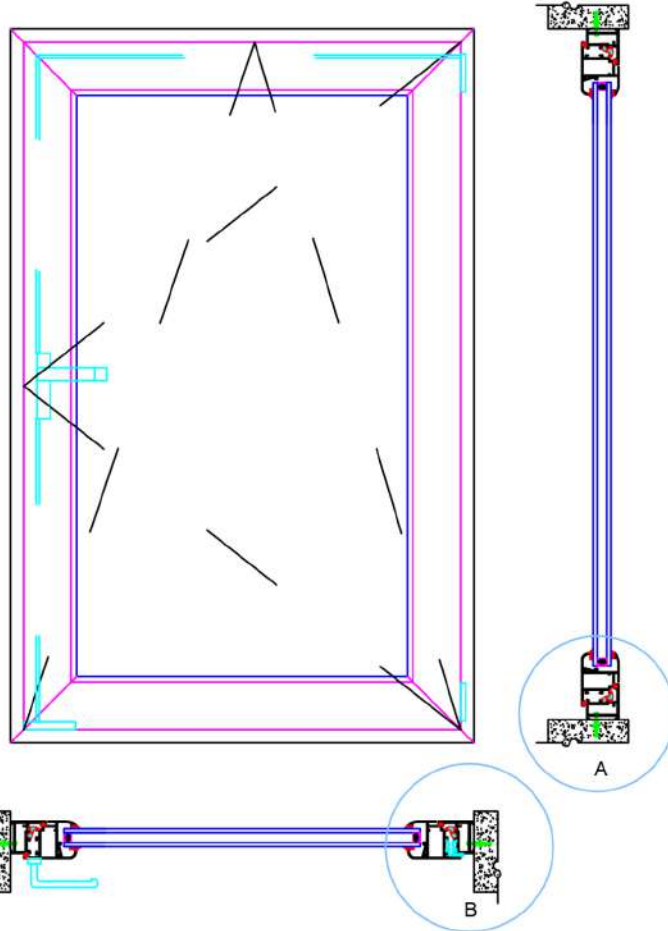
DETAIL-B



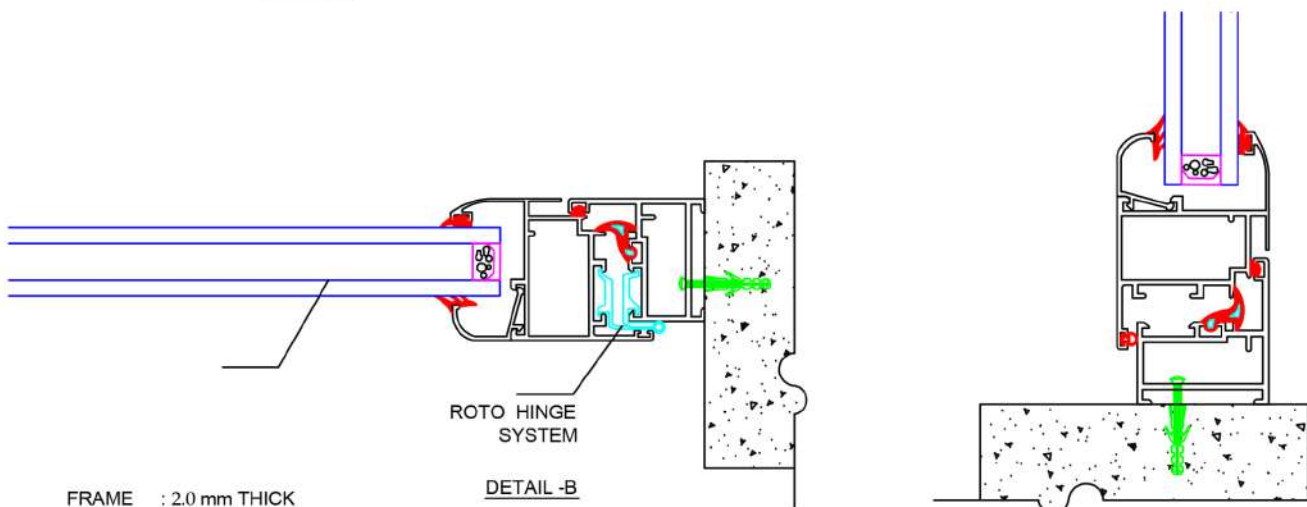
DETAIL-A

WINDOW (TILT AND TURN)

ELEVATION



PLAN

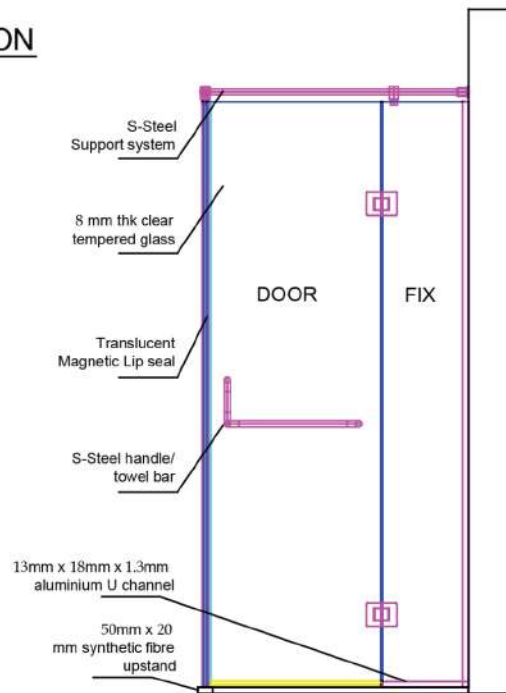


FRAME : 2.0 mm THICK
 SHUTTER: 2.0 mm THICK
 GLASS : 22 mm THICK

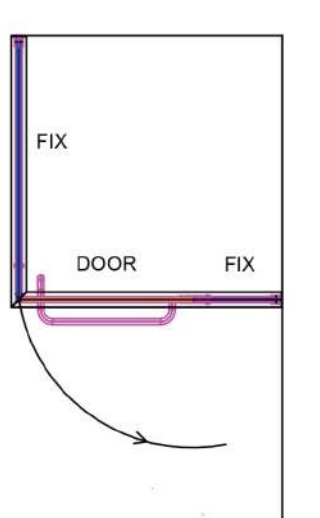
DETAIL - A

SHOWER ENCLOSURE

ELEVATION



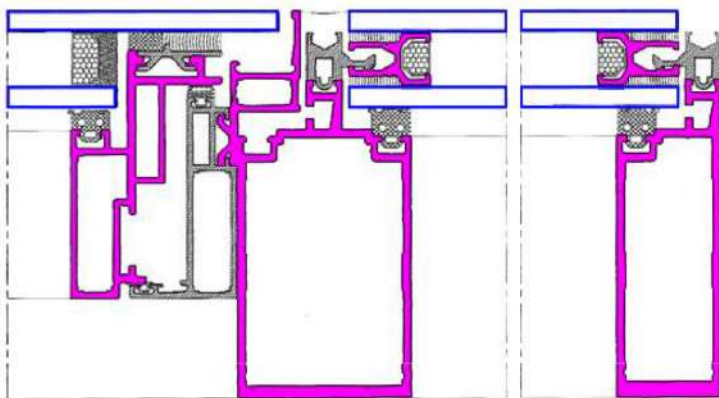
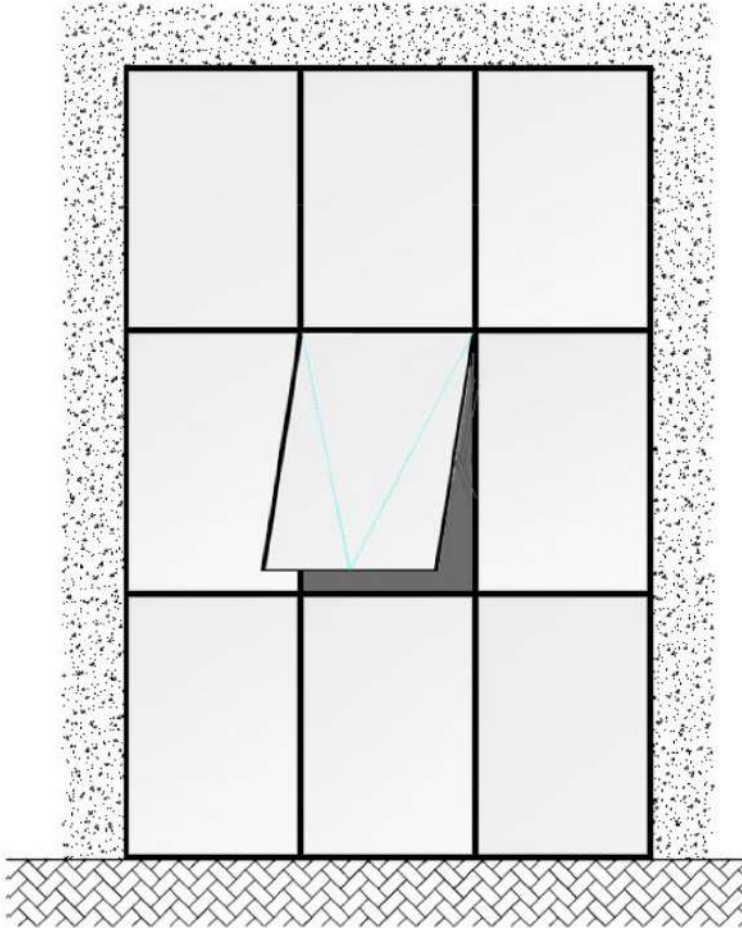
PLAN



- 8 MM. THK. TEMPERED GLASS WITH POLISHED EDGE(DOOR, FIX)
- SOLID BRASS CROME PLATED HINGES
- STAINLESS STEEL TOWEL BAR ,HANDLE AND GLASS SUPPORT
- TRANSLUCENT MAGNETIC , WATER SEALING STRIPS

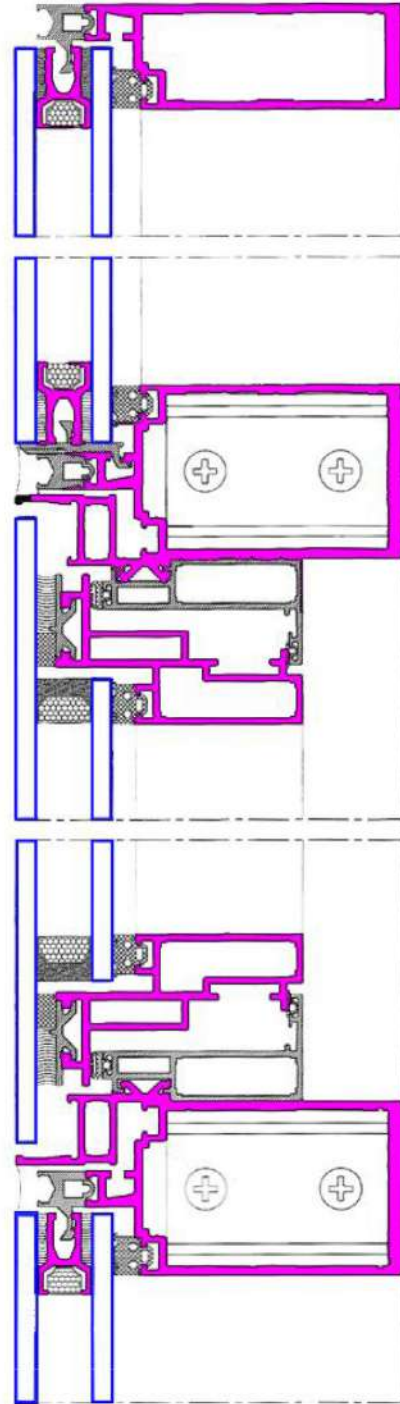
STRUCTURAL GLAZING

ELEVATION



HORIZONTAL SECTION

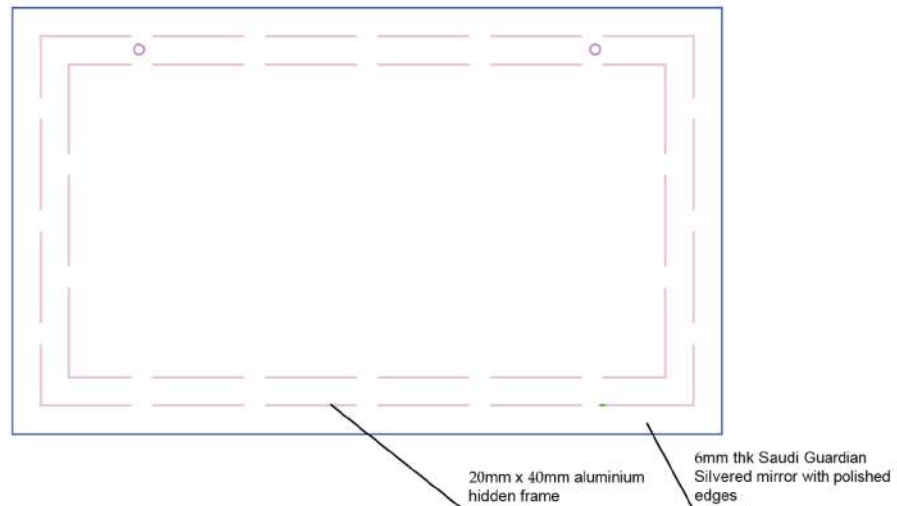
28 mm thick double glazed tempered glass,
Anti corrosion, Weather proofed thick aluminum profiles,
Italian window accessories
High grade structural silicone sealant and gaskets



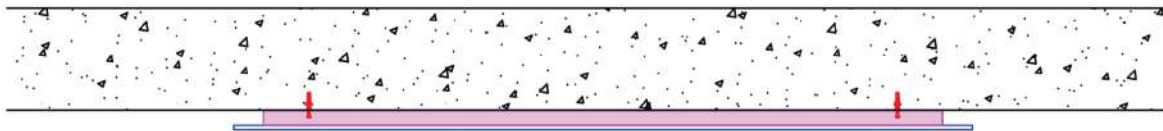
VERTICAL SECTION

TYPICAL MIRROR

ELEVATION



PLAN



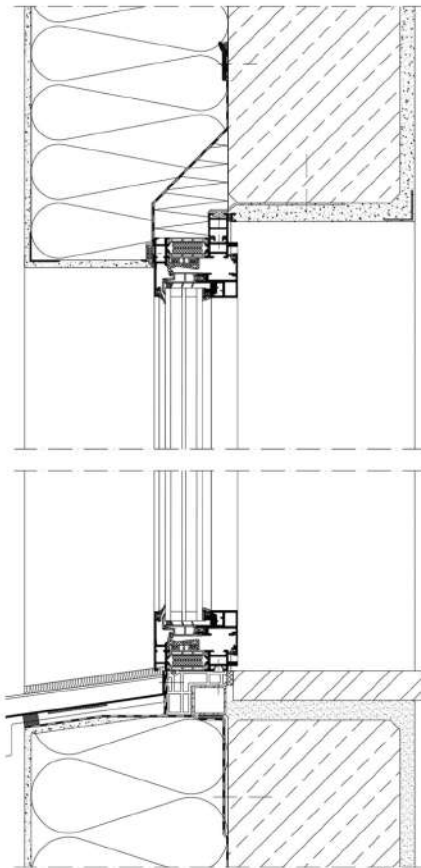
- 6 MM. THK. SAUDI GUARDIAN MIRROR WITH POLISHED EDGE
- HIDDEN LED STRIP LIGHT ALL AROUND (OPTIONAL)
- 20 mm X 40 mm ALUMINIUM HIDDEN BACK FRAME FOR MOUNTING MIRROR
- NEUTRAL CLEAR SILICONE SEALENT TO HOLD MIRROR

SCHÜCO

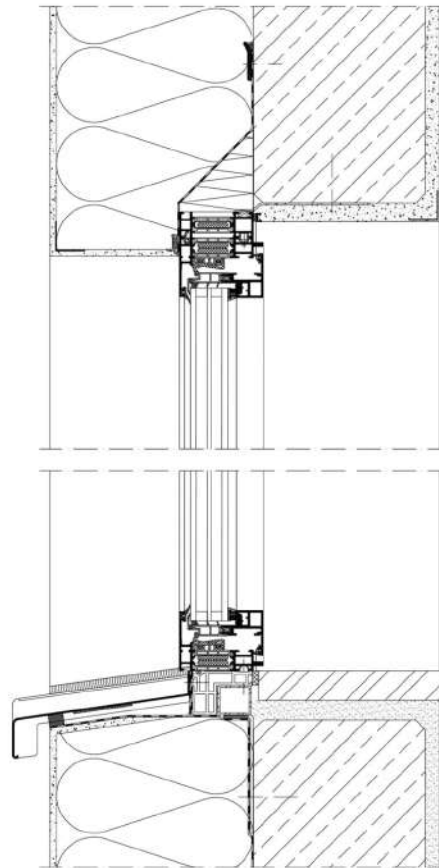
Schüco Window

Oberer Anschluss
Top attachment

Alternative
Alternative



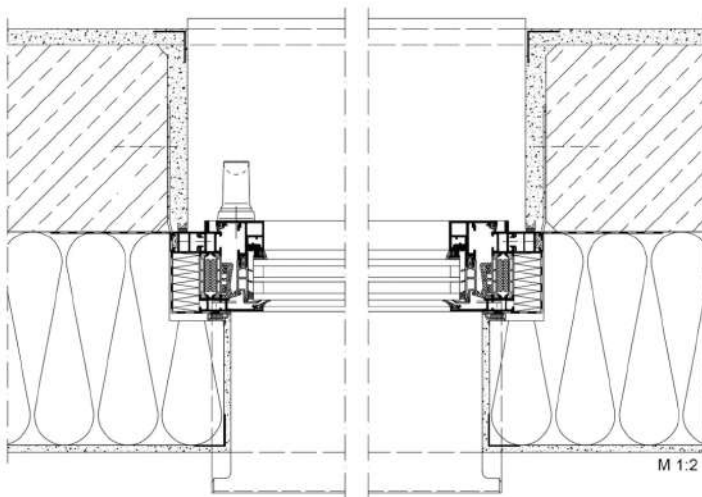
M 1:2



M 1:2

Unterer Anschluss
Bottom attachment

Seitlicher Anschluss
Side attachment



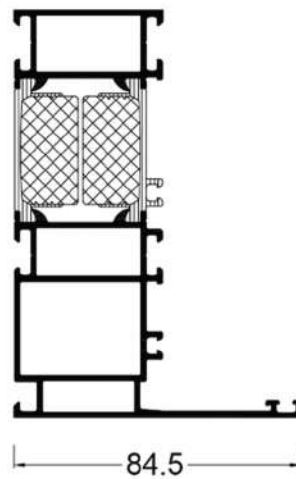
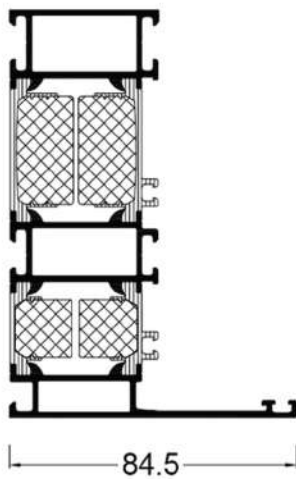
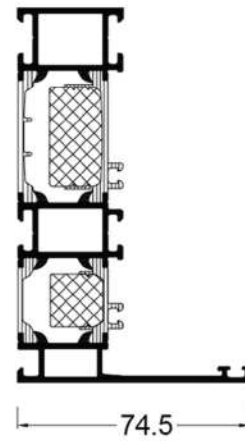
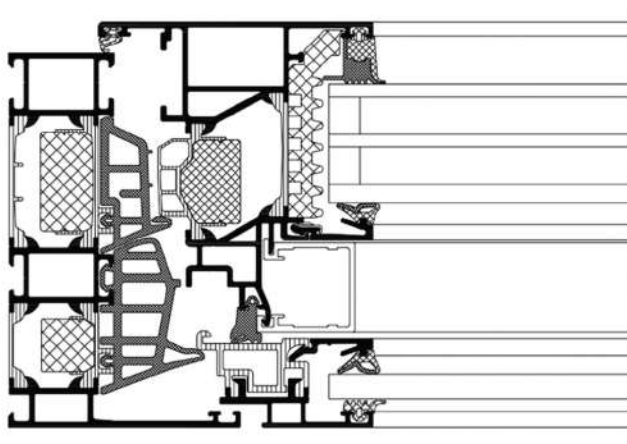
M 1:2

SCHÜCO

Schüco Window



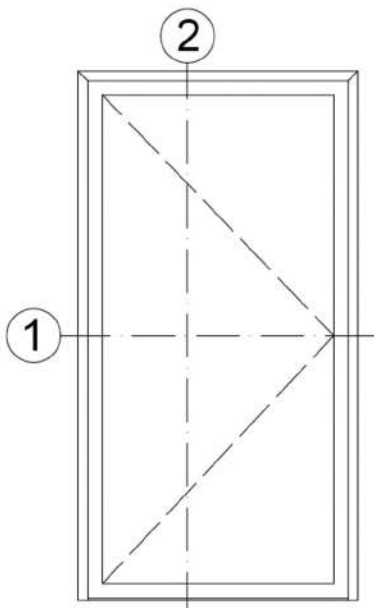
Blendrahmenprofil
Outer frame profile



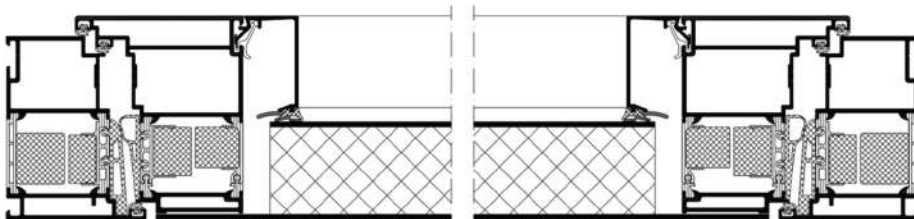
SCHÜCO

Schüco Door

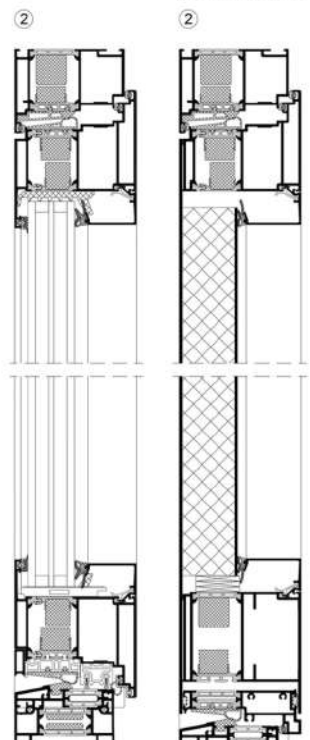
Einflügelige Tür
Single-leaf door



① Flügelüberdeckend einseitig
Leaf-enclosing on one side



Flügelüberdeckend einseitig
Leaf-enclosing on one side

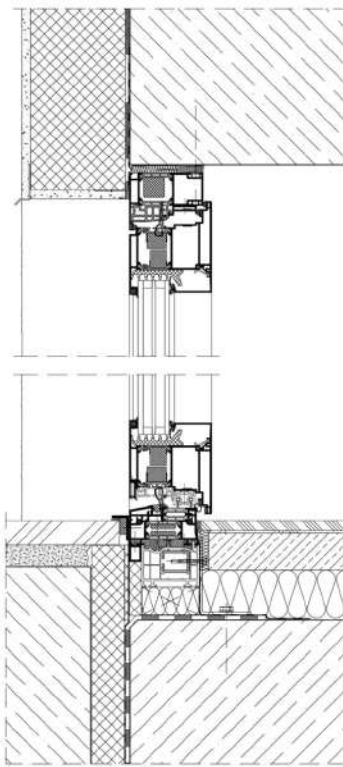


SCHÜCO

Schüco Door

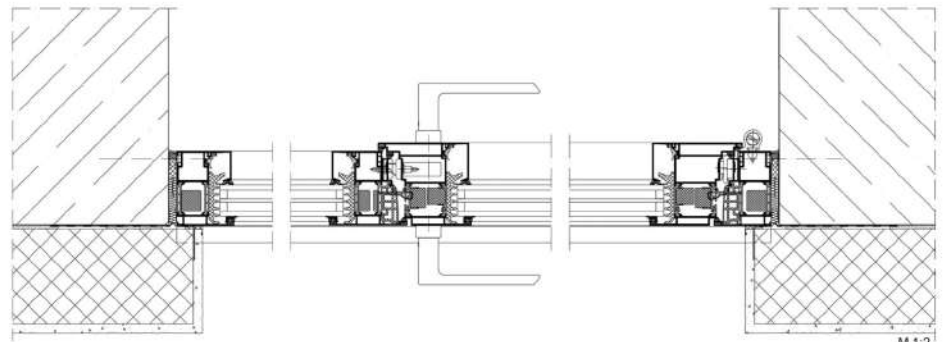
Wand mit WDVS
Wall with composite
thermal insulation
system

Oberer Anschluss
Top attachment



M 1:2

Seitlicher Anschluss
Side attachment



M 1:2

Unterer Anschluss
Bottom attachment

Interior Design

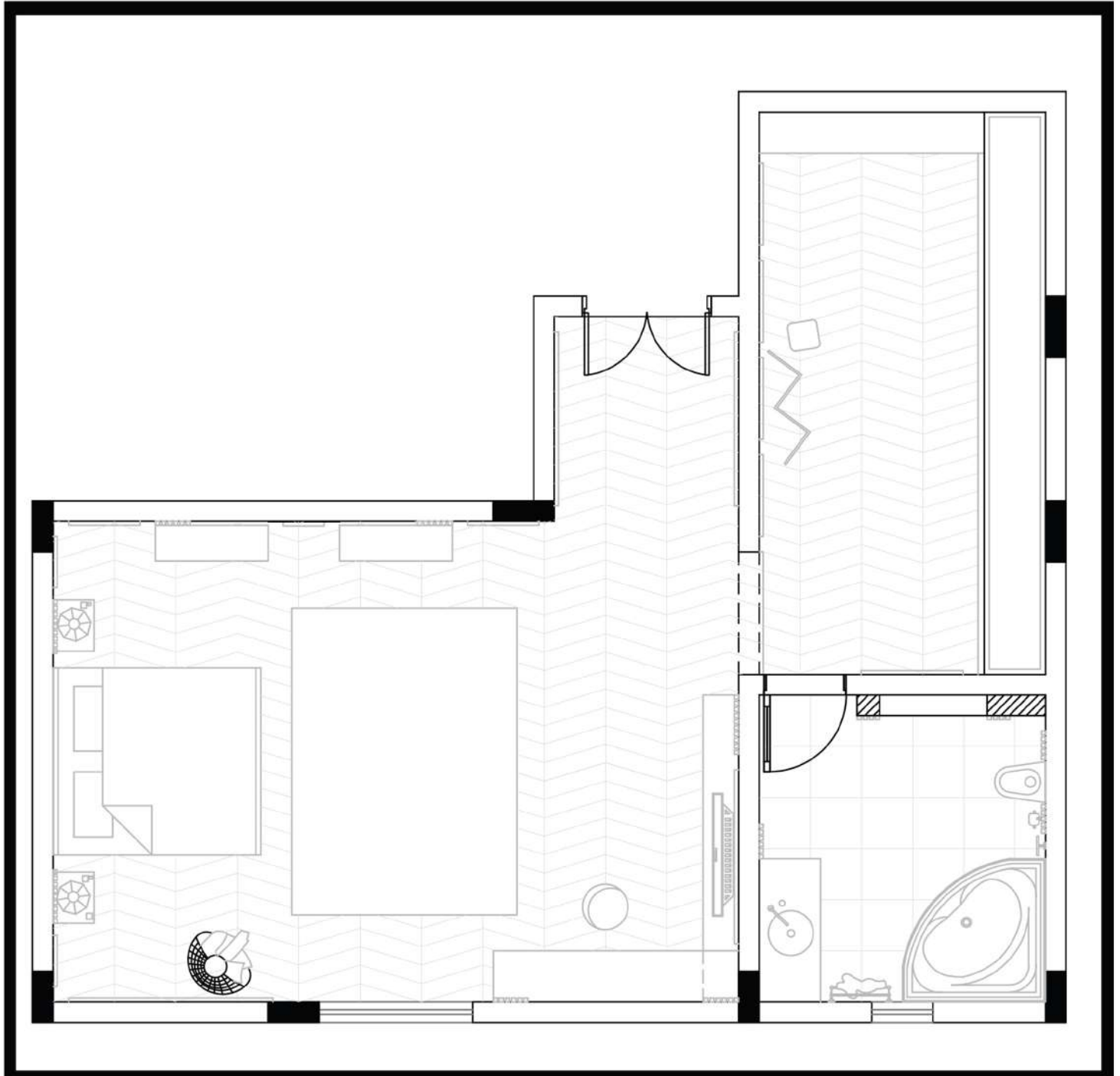
3Ds



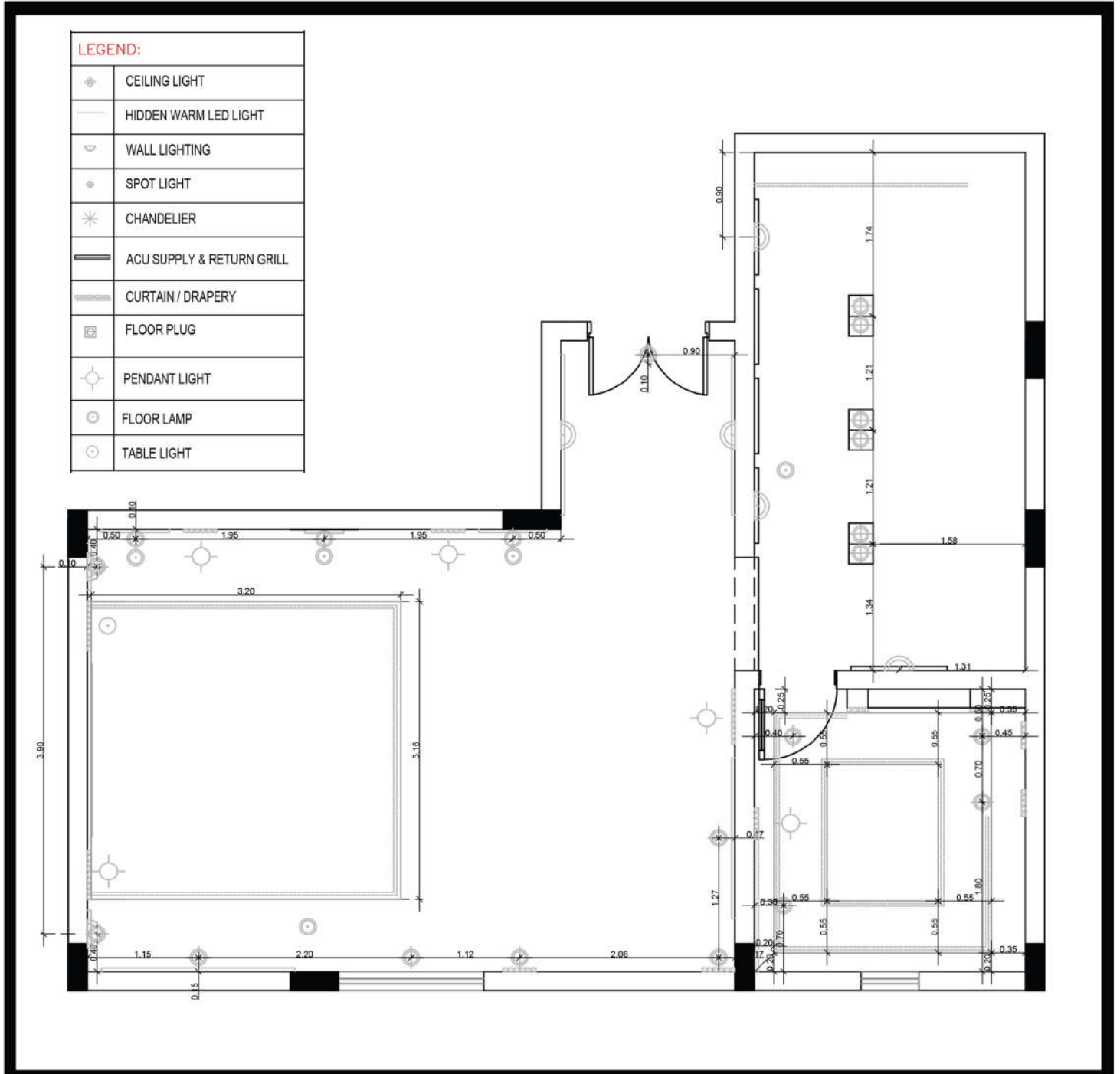
3Ds



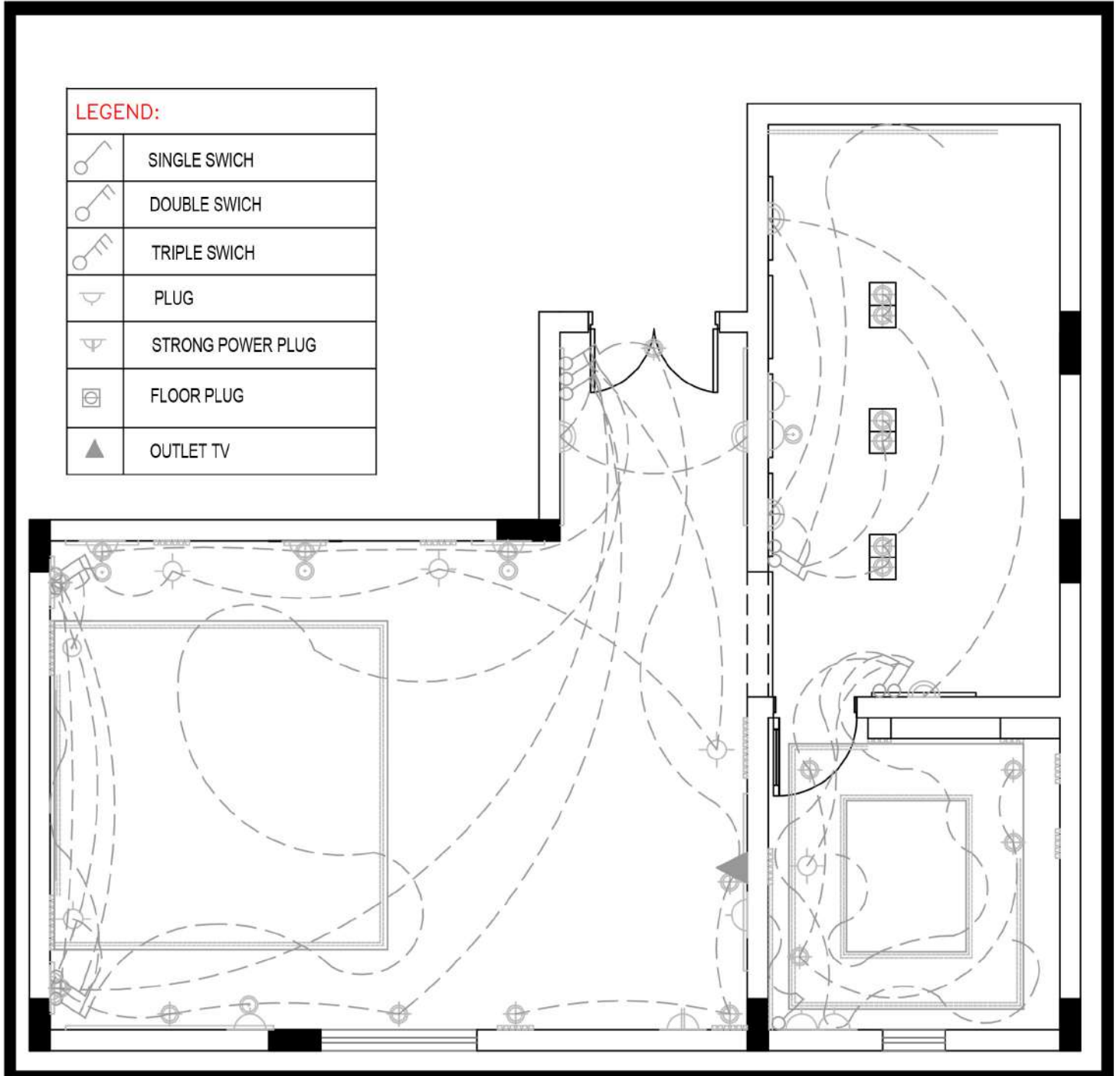
Floor Plan



Ceiling Plan



Power Plan



Contacts information

+966-56-101-9033

Crm@alfarajart.com

ALF  RAJ
ART GLASS